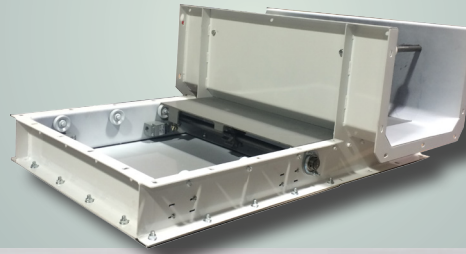


NEW Chain Wiper Assembly

Flush Mounted Slide Gate

Material Handling
Equipment Sales, Inc.

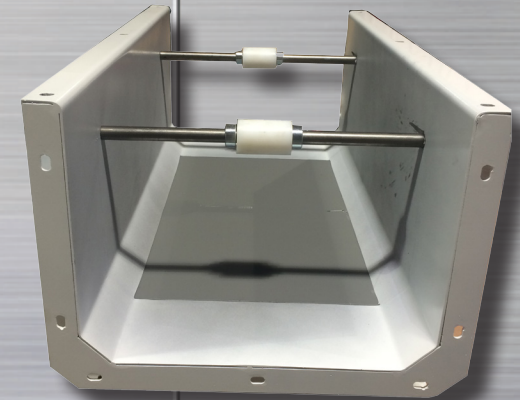
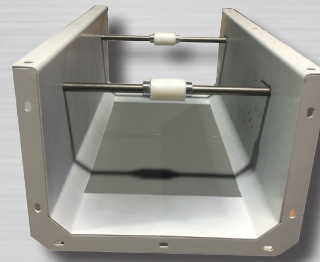


SELF-CLEANING DRAG CHAIN CONVEYORS

The most effective assembly to prevent carry over when discharging intermittently!

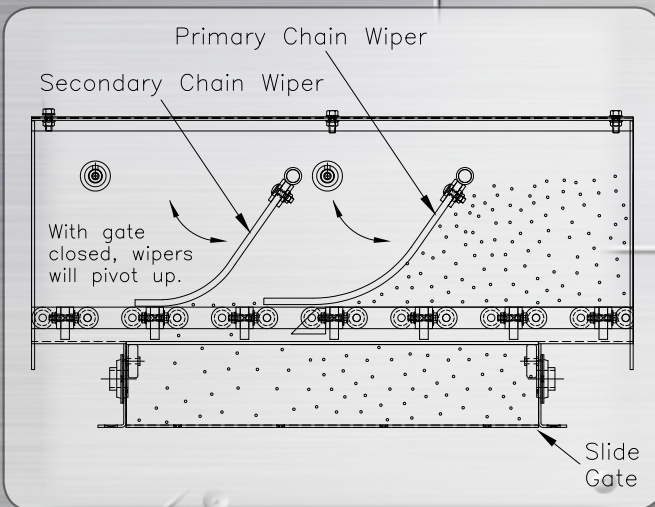
- Chain, flights, & attachments are all on the same plane allowing effective wiping
- Slower chain speed with conservative product depth
- Long discharge openings allowing more time for the product to fall out
- Independent primary & secondary abrasion resistant, flexible chain wipers

- Custom fabricated with tight fit
- Crafted gate is integrated as part of the bed section
- Available in manual or electric control



Made in the
USA

Material Handling
Equipment Sales, Inc.



310 S. Section Line Rd.
Delaware, OH 43015
989-430-4005
Fax: 740-363-9004
www.mhesi.com



Available Features

- Contoured tail to minimize contamination
- 81XH Heavy Duty chain
- Flame cut hardened sprockets
- Galvanized ACME threaded rod take up assemblies
- Galvanized, primed & painted, or powder coat finish
- 1/2" UHMW flights
- Custom gauges & wear liners available
- Variable speed drives

| "LV" Series Drag Chain Conveyors | | | | | |
|----------------------------------|----------------|--|--------|--------|--------|
| Model | Capacity | Chain operating speed in feet per minute | | | |
| | | 75 | 100 | 125 | 150 |
| LV-912 | bushels / hour | 1,299 | 1,733 | 2,166 | 2,599 |
| | cwt. / hour | 585 | 780 | 975 | 1,169 |
| LV-1312 | bushels / hour | 1,902 | 2,536 | 3,170 | 3,805 |
| | cwt. / hour | 856 | 1,141 | 1,426 | 1,712 |
| LV-1712 | bushels / hour | 2,505 | 3,340 | 4,175 | 5,010 |
| | cwt. / hour | 1,127 | 1,503 | 1,879 | 2,254 |
| LV-1718 | bushels / hour | 3,786 | 5,048 | 6,310 | 7,572 |
| | cwt. / hour | 1,704 | 2,271 | 2,839 | 3,407 |
| LV-2118 | bushels / hour | 4,690 | 6,253 | 7,817 | 9,380 |
| | cwt. / hour | 2,110 | 2,814 | 3,517 | 4,221 |
| LV-2418 | bushels / hour | 5,368 | 7,158 | 8,947 | 10,737 |
| | cwt. / hour | 2,415 | 3,221 | 4,026 | 4,831 |
| LV-2426 | bushels / hour | 7,779 | 10,373 | 12,966 | 15,559 |
| | cwt. / hour | 3,500 | 4,667 | 5,834 | 7,001 |

| "HV" Series Drag Chain Conveyors | | | | | |
|----------------------------------|----------------|--|-------|--------|--------|
| Model | Capacity | Chain operating speed in feet per minute | | | |
| | | 125 | 150 | 175 | 200 |
| HV-99 | bushels / hour | 1,884 | 2,260 | 2,637 | 3,013 |
| | cwt. / hour | 848 | 1,017 | 1,187 | 1,356 |
| HV-139 | bushels / hour | 2,762 | 3,315 | 3,867 | 4,420 |
| | cwt. / hour | 1,243 | 1,492 | 1,740 | 1,989 |
| HV-159 | bushels / hour | 3,203 | 3,842 | 4,483 | 5,123 |
| | cwt. / hour | 1,441 | 1,729 | 2,017 | 2,305 |
| HV-1313 | bushels / hour | 4,939 | 5,927 | 6,915 | 7,903 |
| | cwt. / hour | 2,222 | 2,667 | 3,112 | 3,556 |
| HV-1513 | bushels / hour | 5,713 | 6,856 | 7,999 | 9,142 |
| | cwt. / hour | 2,571 | 3,085 | 3,599 | 4,114 |
| HV-1713 | bushels / hour | 6,488 | 7,786 | 9,083 | 10,381 |
| | cwt. / hour | 2,919 | 3,503 | 4,087 | 4,671 |
| HV-1715 | bushels / hour | 7,911 | 9,493 | 11,076 | 12,658 |
| | cwt. / hour | 3,560 | 4,272 | 4,984 | 5,696 |



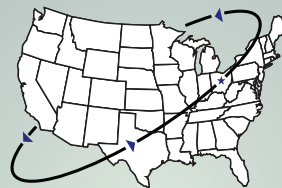
Material Handling Equipment Sales, Inc.

310 S. Section Line Rd.
Delaware, OH 43015

Ph: 989-430-4005

Fax: 740-363-9004

jeff@mhesi.com



Material Handling

Equipment Sales, Inc.

We also can help you with...

- Bucket Elevators, Spouting Accessories, Catwalks, Towers & Flat Back Distributors
- In-Plant Layout Design & Custom Equipment Design

www.mhesi.com